

NOW AVAILABLE FOR SEGA DREAMCAST™

Sega Dreamcast



EVOLUTION

Help Mag Launcher battle the 8th empire for the power of Evolutia.

Sega Dreamcast



SPEED DEVILS

Hell on earth is coming to Sega Dreamcast™. You can't resist speeding in these hot-rods from hell.

Sega Dreamcast



SUZUKI ALSTARE Extreme racing

Join Team Suzuki Alstare® and experience the fast and furious pace of motorcycle racing.

675 Third Street, 3rd Floor - San Francisco, CA 94107
 Rayman 2: The Great Escape © 1999 Ubi Soft, Inc. Ubi Soft Entertainment is a trademark of Ubi Soft, Inc. Rayman, the Rayman logo & The Ubi Soft Entertainment logo are registered trademarks of Ubi Soft, Inc.

Sega is registered in the US Patent and Trademark Office. Sega Dreamcast, the Dreamcast Swirl, are trademarks of SEGA. Sega of America, P.O. Box 7539, San Francisco, CA 94120. All Rights Reserved. Made and printed in the USA. WARNING: Operates only with NTSC televisions and Sega Dreamcast systems purchased in North and South America (except Argentina, Paraguay and Uruguay). Will not operate with any other televisions or Sega Dreamcast systems. Product covered under one or more of the following U.S. Patents: 5,460,374; 5,525,770; 5,627,895; 5,688,173; 4,442,488; 4,454,584; 4,462,076; Re. 35,839, Japanese Patent No. 2870538, (Patents pending in U.S. and other countries); Canada Patent No. 1,183,276. The ratings icon is a trademark of the Interactive Digital Software Association.



RAYMAN 2

THE GREAT ESCAPE™



WARNINGS Read Before Using Your Sega Dreamcast Video Game System

CAUTION

Anyone who uses the Sega Dreamcast should read the operating manual for the software and console before operating them. A responsible adult should read these manuals together with any minors who will use the Sega Dreamcast before the minor uses it.

HEALTH AND EPILEPSY WARNING

Some small number of people are susceptible to epileptic seizures or loss of consciousness when exposed to certain flashing lights or light patterns that they encounter in everyday life, such as those in certain television images or video games. These seizures or loss of consciousness may occur even if the person has never had an epileptic seizure.

If you or anyone in your family has ever had symptoms related to epilepsy when exposed to flashing lights, consult your doctor prior to using Sega Dreamcast.

In all cases, parents should monitor the use of video games by their children. If any player experiences dizziness, blurred vision, eye or muscle twitches, loss of consciousness, disorientation, any involuntary movement or convulsion, IMMEDIATELY DISCONTINUE USE AND CONSULT YOUR DOCTOR BEFORE RESUMING PLAY.

To reduce the possibility of such symptoms, the operator must follow these safety precautions at all times when using Sega Dreamcast:

- Sit a minimum of 6.5 feet away from the television screen. This should be as far as the length of the controller cable.
- Do not play if you are tired or have not had much sleep.
- Make sure that the room in which you are playing has all the lights on and is well lit.
- Stop playing video games for at least ten to twenty minutes per hour. This will rest your eyes, neck, arms and fingers so that you can continue comfortably playing the game in the future.

OPERATING PRECAUTIONS

To prevent personal injury, property damage or malfunction:

- Before removing disc, be sure it has stopped spinning.
- The Sega Dreamcast GD-ROM disc is intended for use exclusively on the Sega Dreamcast video game system. Do not use this disc in anything other than a Sega Dreamcast console, especially not in a CD player.
- Do not allow fingerprints or dirt on either side of the disc.
- Avoid bending the disc. Do not touch, smudge or scratch its surface.
- Do not modify or enlarge the center hole of the disc or use a disc that is cracked, modified or repaired with adhesive tape.
- Do not write on or apply anything to either side of the disc.
- Store the disc in its original case and do not expose it to high temperature and humidity.
- Do not leave the disc in direct sunlight or near a radiator or other source of heat.
- Use lens cleaner and a soft dry cloth to clean disc, wiping gently from the center to the edge. Never use chemicals such as benzene and paint thinner to clean disc.

PROJECTION TELEVISION WARNING

Still pictures or images may cause permanent picture tube damage or mark the phosphor of the CRT. Avoid repeated or extended use of video games on large-screen projection televisions.

SEGA DREAMCAST VIDEO GAME USE

This GD-ROM can only be used with the Sega Dreamcast video game system. Do not attempt to play this GD-ROM on any other CD player, doing so may damage the headphones and/or speakers. This game is licensed for home play on the Sega Dreamcast video game system only. Unauthorized copying, reproduction, rental, public performance of this game is a violation of applicable laws. The characters and events portrayed in this game are purely fictional. Any similarity to other persons, living or dead, is purely coincidental.

CONTENTS

The Story	2-3
Controller	4-5
Starting the Game	6-7
Main Menu	8-9
Game Screen	10-11
Exclusive Sega Dreamcast Features	12-13
Controlling Rayman®	14-15
Powers	16
Rayman®'s Friends	17-18
Rayman®'s Enemies	19
Objects	20
Magic Objects	21-22
Credits	23-26



THE STORY

Panic in the Chamber of the Teensies and the Fairy Council: Robo-Pirates from deep in space have arrived, determined to conquer and enslave their entire world.

The time for combat has come. Volunteers form small resistance groups and throw themselves into battle with the evil aggressors.

Rayman® and his friend Globox go to the edge of The Great Forest, where the highest number of pirates are located.

Rayman® jumps from a tree and activates his helicopter for a soft landing in the middle of a thicket of bushes. "The Pirates are coming straight at us!", cries Rayman® to his friend. "Got ready!"

The earth suddenly begins to tremble...Several trees collapse, creating a passageway for an army of robots.

The Battle begins! Rayman® leaps into action, sending metal monsters flying with his powerful energy spheres. A little later, Globox, trembling with fright, desperately tries to make the robots rust up by creating little rain storms over their heads. A robot, creaking horribly, crashes to the ground.

"Not bad, Globox!" shouts Rayman® with a smile.

Globox tries to answer, but Rayman® doesn't hear. The strained face of Ly has just appeared in his mind.

"Rayman®...", begins Ly, in a weary voice, "The pirates have broken the heart of the world. The energy has scattered. Other than Clark, all of our brave warriors have been captured..."

Shocked by this terrible news, Rayman® lets himself be surprised by a gigantic robot who pins him between its powerful pinchers. He tries to create a new energy sphere in the palm of his hand, but to no avail. The destruction of the Primordial Core has taken away all of his powers...

Desperate, he shouts to his friend...

"They've got me, Globox! Save Yourself!"

"But...but...what about you?!"

"No time to explain! Go find Ly, she'll tell you what to do!"

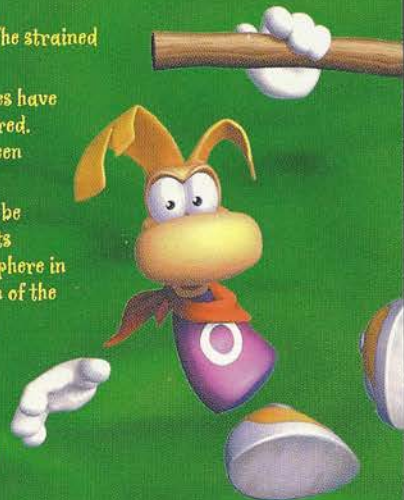
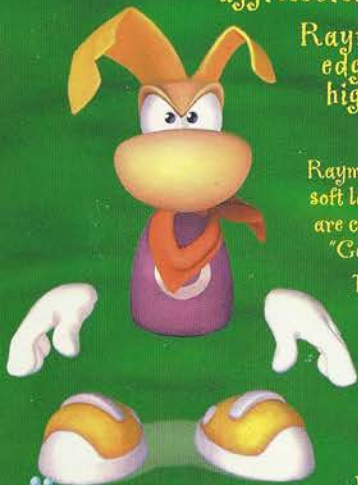
After a moment of hesitation, Globox dodges between the feet of the robots, and plunges into the high grass.

An evil laugh reverberates. Rayman® turns and sees Razorbeard, the leader of the Pirates.

"I have you, Rayman®! You'll soon be my most obedient slave...!"

Rayman® tries to free himself, but the iron grip of the robot tightens around him. He casts a dark look at Razorbeard and shouts defiantly:

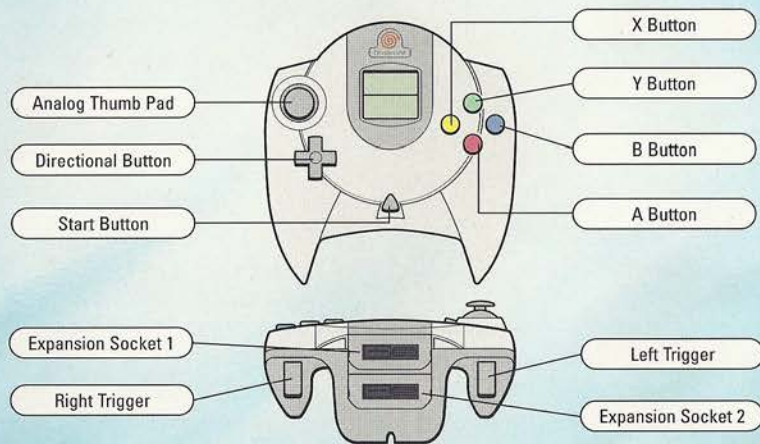
"It's not over yet, pirate! I'll find a way to escape and then I'll make you wish you'd never been born!"



CONTROLLER

Rayman® 2 is a 1 - 4 player game. Before turning the Sega Dreamcast™ power ON, connect the controller or other peripheral equipment into the control ports of the Sega Dreamcast. Purchase additional controllers (sold separately) to play with 4 people.

To return to the title screen at any point during gameplay, simultaneously press and hold the A Button, B Button, X Button, Y Button and Start Button. This will cause the Sega Dreamcast to soft-reset Rayman® 2 and display the title screen.



Never touch the Analog Thumb Pad or Triggers L/R while turning the Sega Dreamcast power ON. Doing so may disrupt the controller initialization procedure and result in malfunction.

Turn the camera to the right	Y Button
Turn the camera to the left	X Button
Jump	A Button
Confirm a selection	A Button
Shoot	B Button
Cancel a selection	B Button
Move Rayman® in any direction	Analog Thumb Pad
Access the Knowledge of the World	Directional Button Up
Access the Menu during the game	START Button

Target an object or an enemy	L Trigger
Bring the camera behind Rayman®	L Trigger
Move sideways	L Trigger
Display information on the screen	R Trigger

Camera use

To get your bearings and find your way around, making good use of the camera is crucial.

Note: The camera position returns to normal once the character is moved.

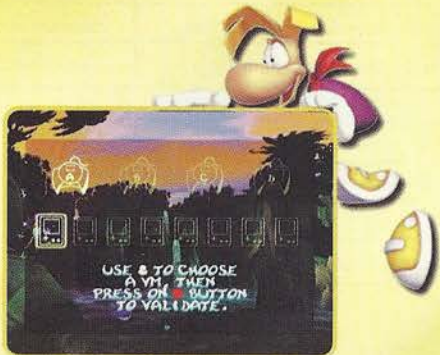
Navigating in the Menus

In every menu, the Analog Thumb Pad enables you to move the cursor and highlight different options. The A Button activates your choice and allows you to access another menu or select an object. The B Button enables you to go back to the previous menu at any time.

STARTING THE GAME

To start playing the game, push the open button on the main unit and insert the RAYMAN® 2 GD-Rom carefully and correctly into your console. Close the door and turn the unit ON.

When the title screen appears, press the Start Button to begin a game. If there is no saved file, press the A Button to access the Main Menu.



Note:

- A Visual Memory Unit (VMU) is required to save a game.
- While saving a game, never turn OFF the Sega Dreamcast Power, remove the memory cards, or disconnect the controller or other peripheral equipment.

> Visual Memory Unit (VMU)

To save a game or resume a saved game, insert a memory card (VMU) into the expansion socket.

Choose the desired expansion socket location with the Analog Thumb Pad. Press A to select, then follow the instructions on the screen to enter your initials.

It is only possible to load a saved game if the VMU is correctly inserted into the console before the power switch is put to the "ON" position.

The number of memory blocks required to save game files varies according to the type of software and content of files to be saved. In Rayman® 2, 4 Blocks are required to save each game (including its options settings).



> Loading / Saving Games

Loading

It is possible to load a saved game at any moment from the game menu. To access the game menu, press the Start Button at any point during the game. Select LOAD to load a saved game.

Saving in The Island of Doors

In order to save a game, Rayman® must be in the Island of Doors.

This magic place, built long ago by the Teensies, allows access to new worlds.

Note: Rayman® can only get to the Island of Doors after travelling through an entire world. To move from one world to another when you are in the Island of Doors, use the Analog Thumb Pad. To enter a selected world, jump through by pressing the A Button.

Every time you access the Island of Doors, your game is automatically saved to the location of your choice at the beginning of the game. To change the location, press the START Button and select LOAD.

MAIN MENU

> New Game

To start and save a new game, choose NEW GAME from the Main Menu.

> Load

To load a saved game, select LOAD from the Main Menu. Select LOAD only if you have already saved a game.

> Options

To access the Options Menu while playing the game, press the Start Button and then select options. In this menu, you can adjust certain parameters to ensure optimal enjoyment of the game.

Options Menu

Internet Access

In the Options Menu, you will find a link to the rayman®2DC.com website.

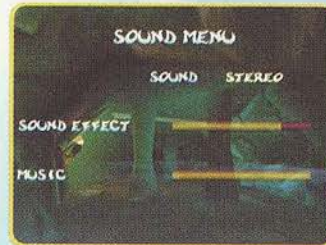
Video Settings

Choose the setting of your choice.

60hz or Wide Screen

Wide Screen settings:

16/9 or 4/3



Sound Settings

Select SOUND to adapt the type of sound to your television.

Select MUSIC and use the Analog Thumb Pad to increase or decrease the sound level of the music.

Select EFFECTS and use the Analog Thumb Pad to increase or decrease the volume of the sound effects.

The Jump Pack

Insert the Jump Pack into expansion socket 2 of the Sega Dreamcast controller. If it is inserted into Expansion socket 1, it does not lock into place and may fall out during gameplay or otherwise inhibit game operation.

To activate the Jump Pack, choose Jump Pack in the Option menu and select ON with the numeric pad or control stick. To deactivate, select OFF.

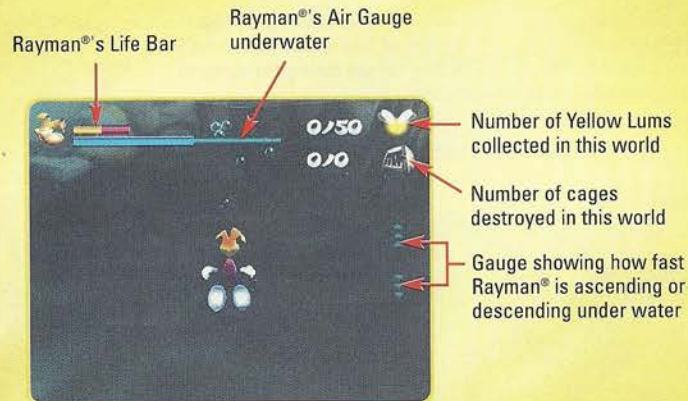


To return to the title screen at any point during game play, simultaneously press and hold the A, B, X, Y and Start Buttons. This will cause the Sega Dreamcast to soft-reset the software and display the title screen.



GAME SCREEN

Throughout his adventures, Rayman® should break open the cages which imprison his friends. This allows him to get the Power Fist that will make his shots more powerful, and to collect the precious energy spheres called "Lums". Above all, he must find the four magic masks which will allow him to awaken Polukus, the spirit of the world.



While playing, you can press the R Trigger at any time to display Rayman®'s Life Bar as well as the number of Yellow Lums collected and the number of cages destroyed.



To find out the total number of items collected in the course of the game, press the Start Button.



EXCLUSIVE SEGA DREAMCAST™ FEATURES

> Internet (bonus map)

You will be able to unlock the hidden mini games in Rayman® 2 DC by surfing on the website!
www.rayman2dc.com

> Globox Village



Bonus:

When Rayman® gains the power to grab onto Purple Lums, you will be able to access a whole new world: Globox Village.

During his long quest to gather the Magic Crystals, Rayman® will meet up with some strange people...

The Magic Crystals will allow him to access new levels and to acquire extra lives and powers.



Globox Disk:

This new world can only be unlocked once you have completed the Globox Village.
It's an original multi-player mini game!



CONTROLLING RAYMAN®

TO MOVE AROUND, press the Analog Thumb Pad in the desired direction. The harder you press, the faster he moves.



TO JUMP, press the A Button.



TO SHOOT, press the B Button.

TO MOVE SIDeways, use the Analog Thumb Pad while pressing the L Trigger. This is very helpful for keeping your enemies in sight and avoiding their fire.



TO SWIM, point the Analog Thumb Pad in the desired direction of your choice. To dive, press the L Trigger. To return to the surface, press the A Button.

Note: Rayman® has total freedom of movement while he's swimming



Sega
© Dreamcast.

WARRANTY REGISTRAT

NOTE: You may also register by phone (415) 547-4028 / fax (415) 547-4001 or on t

Name _____

Address _____

City _____ State _____ Zip _____

E-Mail Address _____ Phone _____

Where did you purchase your copy of Rayman® 2-The Great Escape?

Which gaming publications do you read?

Which gaming consoles do you own/plan to buy within the next 6 months?

Nintendo® 64 PlayStation® Sega Dreamcast™

PlayStation®2 PC CD-ROM

other _____

ION CARD

he web at www.ubisoft.com

- Apt. # _____

- Sex _____ Age _____

RAYMAN 2

THE GREAT ESCAPE

TO ACTIVATE THE HELICOPTER, press the A Button whenever Rayman® is not touching the ground, such as in the middle of a jump or during a fall.

To stop the Helicopter, press the A Button once again.

Remember, the Helicopter can only be activated when Rayman® is in the air already.

Hint: The Helicopter is helpful for landing with precision, in the middle of a jump or during a fall. Also, use Rayman®'s shadow to help you make a steady landing.



TO GRAB onto the edge of most walls, jump and point the Analog Thumb Pad in the direction of the wall. Rayman® will grab hold automatically.



TO CLIMB along nets, walls covered in plant life and spider webs, jump while pointing the Analog Thumb Pad in the direction of the wall. Rayman® will grab onto it automatically. You can then move around freely with the Analog Thumb Pad. To release, jump by pressing the A Button.



TO CLIMB UP BETWEEN TWO WALLS, jump by pressing the A Button, then press the A Button again to grab onto sides of the walls. Repeat these two maneuvers until you reach the top.

POWERS

Throughout his adventures, Rayman® will receive new powers, which give him some amazing moves!



TO PROGRESSIVELY INCREASE THE POWER OF YOUR SHOT, press the B Button and keep it pressed down. The energy ball in Rayman®'s hand will become bigger and bigger. When the desired strength is attained, shoot by releasing the B Button.



TO GRAB ONTO PURPLE LUMS, shoot them. Once you've grabbed on, you can swing in the direction of your choice by using the Analog Thumb Pad. To release, press the B Button.

TO FLY IN HELICOPTER MODE, activate the helicopter by pressing the A Button and keep it pressed down. Not only can the helicopter be used to land you safely, but flying in helicopter mode gives you total freedom to fly in any direction! To stop flying in Helicopter mode, just land on solid ground.

Hint: Press the L Trigger to stabilize your flying direction and to avoid obstacles.



RAYMAN®'S FRIENDS

The inhabitants of Rayman®'s world fall in to two categories: *Magical Beings*, who are gifted with fantastic powers, and the *People*....

> The Magical Beings



✧ POLUKUS

He is the spirit of the world, the creator of all that is and will be... His power is such that his dreams can become reality... Long, long ago he went away from this world, and only by reuniting the four magical masks (see page 21) can he be brought back...

✧ LY

Ly is a fairy, and like all fairies, she possesses great powers. Unfortunately, the explosion of the Primordial Core by the pirates has weakened her. When she has reunited enough energy, she can create Silver Lums, which give amazing new powers to Rayman®



✧ THE TEENSIES

Ancient and wise people who long ago built the Island of Doors (see page 7), that magical place where access is given to all the regions of the world. Very old and a little absent minded, they have forgotten which of them is their King, and spend much of their time performing acrobatic dance moves to make the youngest green with envy.

> The People

✧ GLOBOX

Adorable, if a little simple, Globox is Rayman®'s best friend. He has the power to create forceful little rain storms which can be used to put out fires or make plants grow. With the aid of his mate Uglette, he has produced a prodigious family: more than 650 children at last count!



✦ CLARK

A mountain of muscles, Clark is an army all by himself. With one mighty blow, he can send an entire regiment of pirates flying.

His only weak point: a somewhat sensitive stomach. This can cause problems, especially when in the heat of battle, he munches a robot that's a little too rusty...



✦ MURFY

Nicknamed "The Flying Encyclopedia", Murfy helps Rayman® by giving him loads of hints and advice. For a short reminder of Murfy's main explanations, move Rayman® next to one of the many Stones of Thought scattered around throughout the world (see page 21). If you would rather have Murfy come in-person to give you his detailed explanations, stop by a Stone of Thought and press the Directional Pad down.



✦ CARMEN THE WHALE

A magnificent marine creature, who's job it is to survey the depths of the ocean and deposit the air bubbles which can be the difference between life and death for stray plants and animals. She is sometimes pursued by piranhas with heartburn, who are quite fond of her air bubbles...



✦ SSSSSAM

This young and spirited serpent is the ferryman for the Marshes of Awakening. He helps the inhabitants waterski across the swamps...



RAYMAN®'S ENEMIES

✦ Admiral Razorbeard

The pirate leader, he is famous throughout the galaxy for reducing over one hundred peaceful planets to cosmic dust. Don't be fooled by his pathetic and silly appearance, his ferocity is unmatched.

His dream? Overrun Rayman®'s world and reduce all its inhabitants to slavery...



✦ The Henchmen

These are the pirate's robot invasion force. Totally devoted to Admiral Razorbeard, they enforce a reign of terror by capturing anyone unlucky enough to cross their paths. There exist several different models, each with its strong and weak points. It'll be up to you to figure them out...



✦ The Guardian of the Cave of Bad Dreams

A terrifying monster who's job it is to guard the subterranean cave, where the creatures stemming from nightmares of Polukus are locked away. No one has dared to venture within the Cave of Bad Dreams, even though it's rumored to contain an even more precious treasure...



✦ The Zombie Chickens

We can no longer even keep track of all the sinister results provoked by the arrival of the pirates: disturbances in overall harmony, the proliferation of piranhas, giant spiders and caterpillars, etc....

Terrified by all these events, the hens began laying dead eggs, out of which burst the horrible Zombie Chickens...



OBJECTS



< Cages

The pirates have imprisoned many inhabitants in these little cages sealed with vital energy. Breaking 10 cages increases Rayman®'s Life Bar.

> Kegs

Filled with gunpowder, they explode at the smallest shock. The more advanced models can even fly.



< Shells

Built by the pirates, these are mule-headed missiles which can only be subdued by extreme patience. Most have legs; some can fly.

> Plums

These strange pieces of fruit have several purposes. You can throw them at your enemies, climb onto them and move around by shooting in the opposite direction, and even surf lava flows on them.



< Magic Spheres

Placed on pedestals of the same color, Magic Spheres open the doors to mysterious temples.

> Blockades

Mediocre at best architecturally, the pirates have reinforced their constructions with blockades. The wooden blockades are very fragile but the metal ones will only yield to an explosive.



MAGIC OBJECTS



< The Stones of Thought

The Stones of Thought provide a telepathic link to Murfy. Whenever Rayman® needs a little help or advice, he should approach one of the Stones, and Murfy will appear in his mind.

> Magic Doors

Present at the beginning and the end of a world, they take you to the Island of Doors (see page 7) if you go through them.



< The Power Fist

Having the Power Fist makes Rayman®'s shots more powerful.

Note: If Rayman® dies or gets hit, he loses part of the energy in his Power Fist. After three of these losses, his shots go back to normal power.

> The Four Masks

These magic masks are hidden inside secret and mysterious sanctuaries. The ancient legends say that whoever can reunite the four can awaken mighty Polukus.



< The Crystals

An old legend in the Globox Village tells of Magical Crystals with the power to open mysterious doors.

Keep an eye out, as there are many secret doors and passageways that lead to unknown worlds where you can find fabulous treasures and perhaps become more powerful.

The Lums

Lums are very powerful bursts of energy. Each color has its own special power.



< Yellow Lums

These are the 1,000 shards broken from the Primordial Core when the pirates exploded it. When Rayman® has collected enough of them, he'll be able to negotiate his entry into new worlds.

In addition, they contain precious knowledge. The more Rayman® can gather, the more he knows of the secrets of the world. At any moment in the game, just press the D pad to read new information provided by the Yellow Lums.

> Super Yellow Lums

Ancient Lums are recognized by their larger size and big smiles. They are five times more powerful than normal Yellow Lums.



< Red Lums

Packed with vital energy, they restore Rayman®'s Life Bar.

> Purple Lums

By shooting them, Rayman® can grab onto them and swing from one to another, thereby crossing vast areas without touching the ground.



< Blue Lums

Oxygen rich, they restore Rayman®'s Air Gauge when he's swimming underwater.

> Green Lums

These Lums are very special. They record Rayman®'s progress. If he should die, he will reappear at the place where he last took a Green Lum. If Rayman® had Zero life point, he will restart the entire level at the beginning.



< Silver Lums

The Silver Lums are fashioned by fairies. They invest Rayman® with new and amazing powers.



CREDITS

Best Player	Effacer Ne 'Pas'	Jean-Yves Regnaud
Original Concept	Michel Ancel Frederic Houde	Philippe Vindolet *And Alexandre Baduel
Producer	Anaud Carrette	Francois Cote
Artistic Director	Michel Ancel	Marc Jailloux Joseph Nasrallah
Main Character Programming	Benoit Germain Yann Le Tensorer	Cinematics Jacques Exertier *With Patrick Bodard
Character Design	Alexandra Ancel	Olivier Bonafous
Character Animation	Jacques Exertier	Storyboard Damien Barranco
Engine Programming	Fabien Bole-Feysot *With Frederic 'Bobbie' Balint Anthony Botrel Michael De Ruyter Frederic Decreau Francois 'Globox' Queinnec Olivier 'Oliv' Saillant Carlos 'Le Toulousain' Torres Fabrice Perez	Animation Patrick Bodard Jean-Yves Regnaud Philippe Vindolet
Graphics	Alexandre 'Alex' Gatto *With Charles 'Baby' Beirnaert Christophe Bourges Floppyflo Charpentier Manuel 'Emilos' Hauss Yann Jouette Laurent Le Guellaut Emmanuel Ville	Integration Olivier 'Sun' Soleil *With Nicolas 'Nicky' Chereau Sebastien Dezautez Michel Momcilovic
Visual Effects & Additional Artwork	Francois 'Jeff' Queinnec	Infodesign Ivan Capin *With
Moss And Shadow Fx	Frederic 'Bobbie' Balint	Main Character Fabien Bole-Feysot
Game Design	Christophe 'Mc Leod' Thibaut *With Stephane 'Parrot' Hilbold Frederic 'Crevette' Gaveau Bruno 'Beer' Bouvret Philippe Blanchet	Other Characters Eric 'Necrodancer' Prevost Michel Momcilovic Nicolas 'Nicky' Chereau Yann 'Polok' Masson Frederic Lefebvre
Animation	Laurent Le Guellaut *With Jacques Exertier Patrick Bodard	Scenario And Dialogs David Neiss
		Based On A Story By Michel Ancel
		Sound Design Gregoire Spillmann Ida Yebra Olivier Bonafay Lambert Combes Romain His
		Music By Eric Chevalier
		Voices David Gassman Pierre-Alain De Garrigues Coralie Martin
		Sound Effects Talk Over



Sound Engine Programming Frederic Decreau
Sound Engineering Martin Dutasta
 *With
 Lionel Bouhnik
Music Editing Guillaume Billaux
Data Management Nary-Tiana Andriamampandry
Test Yanick 'Zombie' Beaudet
 *With
 Cedric 'Roufrouf Ntnic' Altes
 Natasha 'Bluegirl' Bouchard
 Alexandre 'Dr.Bouc' Boutin
 Stephane 'Gambit' Caissie
 David 'Heldoc' Deschenes
 Jean-Francois 'Jeejee' Dupuis
 Jonathan 'Johnwon' Gagnier
 Benoit 'Slaine138' Gagnon
 Alain 'Teckal' Gagnon
 Daniel 'Karnagex' Jacques
 Ahmad 'Deuce' Jamous
 Stephan 'Mindfield' Leary
 Alexandre 'Zolix' Martel
 David 'Corrosion' Ragaut
 Pierre-Yves 'Napalmz' Savard
 Eric 'Elvis' St-Jean
 Eric 'Brainbug' Visconti
 Eric 'Storm' Audette
 Vincent Chardonnerau

Main Tools Bernard Lefevre
 Chantal Oury
 *With
 Yves Babitch
 Corneliu Babiuc
 George Baltatanu
 Xavier Billaut
 Fabien Bole-Feysot
 Dan Dragan
 Catalin Dumitrescu
 Mircea Dunka
 Joel Gregoire
 Ionut Grozea
 Christophe Martinaud
 Estelle Parent
 Cristi Petrescu
 Cristi Rizea
 Pascal Ruiz
 Nicolae Suparatu
 Mihaela Tanku
 Philippe Touillaud
 Malika Sahla
 Frank Servetaz

3d Plug-Ins

3d Research

Planning

International Marketing

First Programming Team

Second Programming Team

First And Second Graphic Team

Mickael Veaudour
 Daniel Raviart & All The Others
 That We May Have Forgotten
 Philippe Vimont
 Anne 'Catwoman' Villeneuve
 Laurence Buisson
 *With
 Domitille Doat
 *With Miss Rayman#2 Dc
 Geraldine Durand
 Olivier 'Lo' Didelot
 Frederic 'Gopher' Balint
 Xavier Billaut
 Helene Pokidine
 Francois Queindec
 Alain Robin
 Olivier 'Oliv' Saillant
 Marc Villemain
 Daniel Palix
 Benoit Germain
 Marc Trabucato
 Jacques Thenoz
 Chantal Oury
 Guillaume Souchet
 Guillaume Clement
 Michael De Ruyter
 Olivier Albiez
 Fabrice Perez
 Fabien Bole-Feysot
 Yann Le Guyader
 Francois Queindec
 Carlos 'Le Toulouseain' Torres
 *With
 Christophe Beaudet
 Frederic Compagnon
 Christophe Giraud
 Jean-Marc Drouaud
 Vincent Lhullier
 Yann Le Tensorer
 Alexis Vaisse
 Marc Fascia
 Thierry Quere
 Alexandre 'Alex' Gatto
 Christophe Bourges
 Floppyflo Charpentier
 Florent 'Flavio Sacrito' Sacre
 Celine 'Cel' Tellier
 Arnaud 'Kyo' Kotelnikoff
 Pierre-Henry 'Phl' Laporterie

First Game Design Team

First & Second Animation Team

Jean-Christophe Alessandri
 Paul Tumelaire
 Nicolas Carre
 Fabrice Holbe
 Nicolas Daire
 Yann 'Eco Warrior' Leclerc
 Christophe Pic
 Stephane 'Zinoche' Zinetti
 Sebastien 'Sebbic' Bicornne
 *And
 Denis Capdeferro
 Geoffroy De Crecy
 David Garcia
 Yann Jouette
 Youri Junquas
 Frederic Lefebvre
 Michel Vibert
 Emmanuel Ville
 Agata Wierzbicki
 Christophe 'Mc Lead' Thibaut
 Fred Houde
 Jean-Christophe Guyot
 Michael 'Mic' Janod
 Serge Hascoet
 *With
 Olivier 'Palmito' Palmieri
 Gregory Palvadeau
 Xavier 'The Druid' Plagnal
 Olivier Diaz
 Zoran Milišavljević
 Dorian Thibaut
 Jean-Christophe Petit
 Sebastien 'Sebbic' Bicornne
 Yann 'Nnay' Leclerc
 Vincent 'Papa Vince' Monnier
 Jean 'Draax' Zappavigna
 Olivier 'Sun' Soleil
 Stephane 'Parrot' Hilbold
 Frederic 'Crevette' Gaveau
 *And
 Jean-Marc Marcin
 Christophe Cavelan
 Philippe Arsenaud
 Erik Branz
 Sebastien Brassard
 Jennifer Dickie
 Christian Dion
 Jean-Sebastien Duclos
 Jamie Helman
 Phil Holloway
 Francois Laperriere
 Sean Lablanc

First Infodesign Team

Main Character

Other Characters

Data Management

First Test Leader

Xtra Mega Thanks To

Xtra Mega Kisses To

WW Studios Manager

Local Studios Managers

Michael Linington
 Carla Prada
 Allan Treitz
 Mike Zingarelli
First Infodesign Team
 Arnaud Ritchy Guyon
 Frederic Houde
 *With
 Yann Le Tensorer
 Benoit Germain
Main Character
 Olivier Dauba
 Sebastien Dezautez
 Olivier Diaz
 Jean-Christophe Guyot
 Michael 'Mic' Janod
 Yann 'Polok' Masson
 Michel 'Mom' Momcilovic
 Nicolas 'Nicky' Chereau
 Olivier 'Sun' Soleil
 *And
 Cedric Barthou
 Matthieu Fournaison
 Philippe Laurens
Data Management
 Guenaelle Mendroux
 *With
 Nary-Tiana Andriamampandry
 Hanane Sbai
First Test Leader
 Yanick Beaudet
Xtra Mega Thanks To
 The Necrodancer
 For His Marvellous Help
 On Globbox Town
 And Great Support For
 The Life Of The Disc ...
 Idem To Tit'biche
Xtra Mega Kisses To
 Rayman#2 Babies
 Fanny
 Morgane
 Clara
WW Studios Manager
 Dominique Bordenave
 Christine Chosson
 Christophe Derennes
 Cyril Derouineau
 Serge Hascoet
 Eric Huynh
 Didier Lord
 Guenaelle Mendroux
Local Studios Managers
 David Reizer
 Nikola Milišavljević
 Alexandre Baduel



Ahmed Boukhelifa
Sylvain Brunet
Sandrine Maigret
Eric Martinaud
Gilles Monteil

Sites Managers

Anncy Daniel Palix
Montpellier Michel Ancel
Montreal Christophe
Derennes
Montreuil Christine
Burgess

Production

Ubi Production
Gerard Guillemot

Publishing

Ubi Soft
Yves Guillemot

Development

Ubi Studios
Michel Guillemot

Former Management Team

Pauline Jacquey
Steve Mc Calla

Xtra Thanks

To The Greatest Support

Daniel Palix

US TEAM

US Marketing Manager:

Mona Hamilton

US Packaging Design:

Axiom Design
Mari Sakai

US Ad & Merchandising Design:

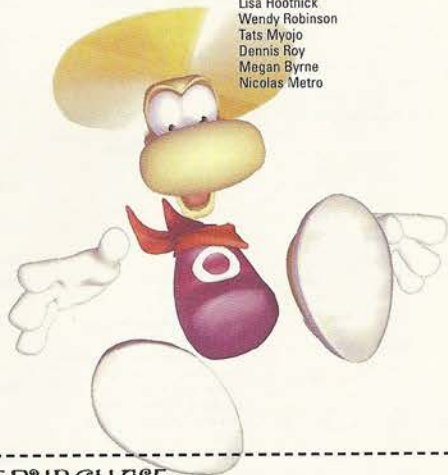
Melissa Wilks

Public Relations:

Sandra Yee
Melanie Melton

Special Thanks to:

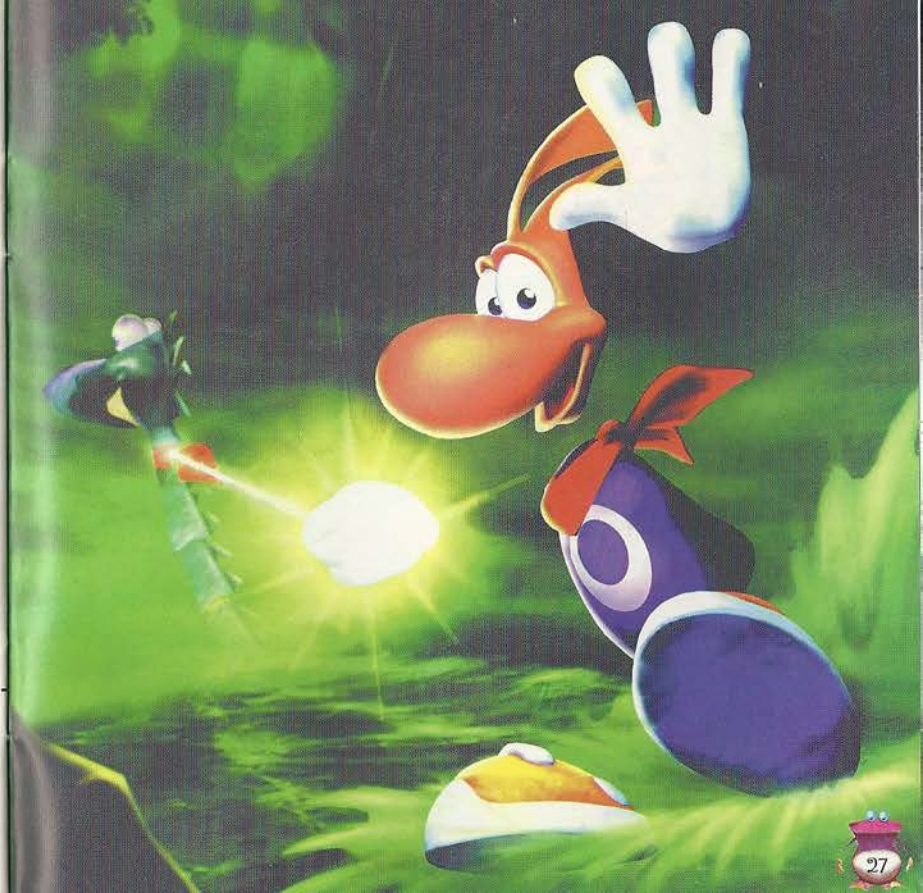
Laurent Detoc
David Bamberger
Carrie Tice
Lisa Hootnick
Wendy Robinson
Tats Myojo
Dennis Roy
Megan Byrne
Nicolas Metro



PROOF OF PURCHASE

Rayman® 2
The Great Escape

0.08888.26005.9



NEED HINTS & TIPS?

Hint Line
900-420-4UBI

This service will provide you with exclusive tips
and game play secrets for Rayman 2.



Call is \$.95 per minute. You
must be 18 or have parental
permission to use this service.

UBI SOFT ENTERTAINMENT, INC. LIMITED WARRANTY

Ubi Soft Entertainment warrants to the original purchaser that the optical media on which Rayman[®] 2 is distributed is free from defects in materials and workmanship for a period of ninety (90) days from the date of purchase. This Ubi Soft, Inc. software program is sold "as is", without express or implied warranty of any kind, and Ubi Soft is not liable for any losses or damages of any kind resulting from the use of this program. Ubi Soft, Inc. agrees for a period of ninety (90) days to replace defective media free of charge, provided you return the defective item with dated proof of payment to the store from which this product was purchased. This warranty shall not be applicable and shall be void if the defect in the Ubi Soft, Inc. software product has arisen through abuse, unreasonable use, mistreatment or neglect.

LIMITATIONS - This warranty is in lieu of all other warranties and no other representations or claims of any nature shall be binding on or obligate Ubi Soft, Inc. Any implied warranties applicable to this software product, including its quality, performance, merchantability and fitness for a particular purpose, are limited to the ninety (90) day period described above. In no event will Ubi Soft, Inc. be liable for any direct, indirect, special, incidental, or consequential damages resulting from possession, use, inability to use or malfunction of this Ubi Soft, Inc. software product or documentation, even if advised of the possibility of such damages. In no case shall Ubi Soft, Inc.'s liability exceed the amount of the license fee paid. The warranty and remedies set forth above are exclusive and in lieu of all others, oral or written, express or implied. Some states do not allow limitations as to how long an implied warranty lasts and/or exclusions of liability may not apply to you. This warranty gives you specific rights, and you may also have other rights that vary from state to state.

TECHNICAL SUPPORT - If you need technical assistance with this product, call us at (415)547-4028 Monday through Friday between 8:30AM and 5:30PM, Pacific Standard Time, or write to us at the address noted below. No hints, tips, or codes are available from this phone number or address.

TO REACH US ONLINE - Access our Web Site at <http://www.ubisoft.com>



Ubi Soft Entertainment, Inc. 625 Third Street, 3rd Floor, San Francisco, CA 94107

Rayman 2: The Great Escape © 1999 Ubi Soft, Inc. Ubi Soft Entertainment is a trademark of Ubi Soft, Inc. Rayman, the Rayman logo & The Ubi Soft Entertainment logo are registered trademarks of Ubi Soft, Inc. Sega Dreamcast is a trademark of Sega Enterprises, Ltd. Sega of America is a registered trademark of Sega Enterprises, Ltd. All rights reserved.

ESRB RATING

This product has been rated by the Entertainment Software Rating Board. For information about the ESRB rating, or to comment about the appropriateness of the rating, please contact the ESRB at 1-800-771-3772.

Sega is registered in the US Patent and Trademark Office. Sega Dreamcast, the Dreamcast Swirl, are trademarks of SEGA. Sega of America, P.O. Box 7628, San Francisco, CA 94120. All Rights Reserved. Programmed in Japan. Made and printed in the USA. WARNING: Operates only with NTSC televisions and Sega Dreamcast systems purchased in North and South America (except Argentina, Paraguay and Uruguay). Will not operate with any other televisions or Sega Dreamcast systems. Product covered under one or more of the following U.S. Patents: 5,460,374; 5,525,770; 5,627,895; 5,688,173; 4,442,496; 4,454,594; 4,462,076; No. 35,839; Japanese Patent No.2870538, (Patents pending in U.S. and other countries); Canada Patent No. 1,183,276. The ratings icon is a trademark of the Interactive Digital Software Association.

SEGA[®]